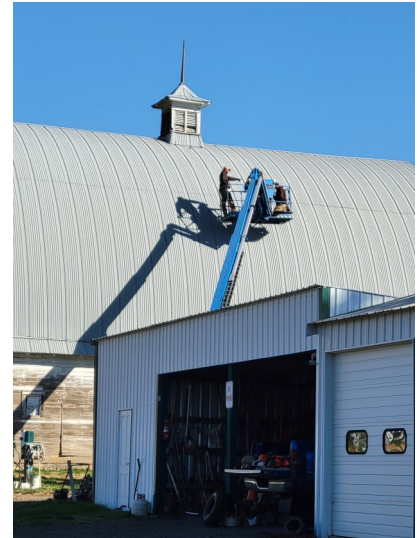


Maintenance—The Never Ending Story

Half of the roof on the barn at the home place was installed in 1995 and an additional shop building was built that same year – all with metal sheeting and screws. This year as I was looking at the barn roof, I could see some of the screws had loosened thus letting the metal seams stand up. This could lead to a catastrophic failure if high winds came from the right direction. I would remind you that the barn roof is of gothic arch style and 42 feet at the peak. There are not many roofers willing to work on these. We were fortunate enough to find a great contractor to remove and replace the 2500+ screws and tighten down the roof in an amazing one

day time period. Thanks to Iron Mountain Construction and his 3-man crew out of Desmet, ID. On the other building about 300 screws needed to be replaced and or tightened down. This project was accomplished by myself as the roof is a contemporary design with a 4/12 pitch. However, it took me about 2 days to accomplish as I have determined that up and down on the ladders and on my knees to work is getting less compatible with the number that has a direct relation to my age. Nevertheless, jobs completed for an expected life of the roofs to be at least another 25 years.



Let's Save the Taxpayers a Lot of Money



The Meyer's Place fence borders State Route 195 for about 1 ½ miles. Spring Flat Creek also meanders in and out of the Meyers Place for the same 1 ½ miles. At one point at about the halfway point, Spring Flat Creek runs right up to the state highway route and has been eroding the bank of the road and the

perimeter fence. This was brought to the attention of the State Highway District about six years ago. I had offered to allow the WSDOT access to our property in order to proactively fix this problem before either the road collapsed or drivers on the curve having a huge wreck due to no bank along the road. At that time the WSDOT took no interest in preventative repair. I did document the discussion and assured the WSDOT office that if someone was injured or killed, I would be sharing the information with the victims. Fast-forward six years. All the staff have changed and this issue has gotten much much worse. During the winter

of 2021-2022, (which was not a high runoff water year) the bank eroded another 3 feet. The fence was now hanging in mid-air and the erosion was about 10 feet from the moving traffic. I again contacted the WSDOT office and this time with new personnel, they took an active interest in the repair. The process was not fast as permitting had to be issued, all agencies had to agree to the plan (DOE, Fish & Game, WSDOT engineering and the adjacent landowners [us]). That process took a painstaking 2 months to complete. Then the meeting with the local WSDOT office, engineering with differing designs for the fix and (including Maple K) deciding on one to implement. The agreed to fix included about 6-8 loads of varying size boulders being placed in a "natural" style and building a wall approximately 6-8 feet tall and 50 feet long without cutting out any of the tree limbs that were there and rebuilding the fence. Seems simple, but it took about 6-8

workmen 3 days, closing one lane of the State Highway and (the least complicated piece) us moving the cattle to well removed pastures away from the construction. You see, cattle and no fences along a highway are not compatible concepts! The end result was excellent and will most likely never have to be dealt with again. I was pleased to not have this issue in the back of my thoughts anymore.. And finally- thank you to a new forward thinking WSDOT staff at the Colfax office.





MAPLE K FARMS LLC

**1102 Kammerzell Rd.
Colfax, WA 99111**

Phone: 509-397-4589

Email: maplekfarms@gmail.com

Naturally Grown—Naturally Good!



If you are not interested in receiving this newsletter, please let us know. Thank you.

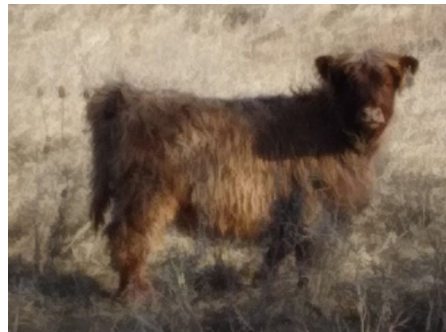
Mr. Milo

Milo has determined that he is not as interested in traveling with us so he has made reservations to reside at his favorite resort “Camp Hannahwalka” and will be readily available for important decisions if necessary. Such as how many treats he needs, the amount and frequency of daily rations (his) and what amount of sleep was needed to be able to make those important decisions.



DOWN ON THE FARM

The Last Calf



This spring calving came and went without a hitch – almost! One cow was a little late. The spring move to pasture went without a hitch except now the last cow was even later – 1 ½ months late. That’s OK, we will

just keep her at the home place for a little bit till she has her calf here in front of the house. Summer is here, summer is moving along, OK where is that calf? She is obviously pregnant as she waddles and has udders pointing in all different directions, they are so full. Finally, four months late, she produces a beautiful heifer calf. All we can figure is for some reason after we preg checked last year and confirmed the pregnancy, she must have lost that one and then been rebred. I guess it is better late than never, but she has put a crimp in her calving schedule, the pasture schedule, the breeding schedule, and weaning schedule. We will be moving her back to the regular schedule with the rest of the cows, but this is not done quickly. It will take 3 to 4 years. If all of this was easy, I guess everyone would do it.



DOWN ON THE FARM

Maple K Farms LLC

Colfax, Washington

VOLUME 17 ISSUE 1

2022

Special points of interest:

Come visit us on the farm!

Please call before you visit to make sure we are here to show you around.

509-397-4589

INSIDE THIS ISSUE

Maintenance	2
Maintenance Again	3
Taxpayers	3
Farm Update	4
Port Duties	4
Family Update	5
Mr. Milo	6
Late Calf	6

More to Do—But For a Great Cause



crete. My appointment is a three year commitment. The first round of applications was over 20 so they were ranked from one to 20. The funding will be decided by the State Legislature to a determined amount. Then the ranked projects will be awarded until the funding runs out.

As you may recall, in 2015 we put a Conservation Easement for the purpose of Wetland Mitigation on the 111 acres on the back portion of the Meyers Place and then in 2018 we put a Farmland Preservation easement on the remaining portion of the Meyers Place due to increased pressures due to building development. Well, in March of this year, I got a phone call from the Washington State Recreation and Conservation Office, specifically from the Farmland preservation committee asking if I would be interested in serving on the committee to review and score the applications to be funded. In the ensuing discussion I found out that of the eleven member review committee there were only four members that actually had involvement with agriculture. The rest represented different government agencies and in fact, no one that had ever been

through the process had ever served on the committee. Believe me in saying I do not need anything more to do at this time, but, this program is of such value in keeping agricultural production ground from changing its usage into just more housing, that I said “Yes”. The future of agriculture to provide more food for an ever increasing hungry population relies on keeping soil in production – not more asphalt and con-



Another Maintenance Project



Before



No Dear! I Mean Deer!

Short update on the deer population. After the 99% die off last year, we have just 5 head that remain of the 125 head population we used to have. The good news is that the deer are not eating on the newly planted trees. The bad news is that there will be no hunting now and in the foreseeable future.

Living in a house covered with steel siding, you would expect minimum maintenance which is true except paint wears out even on this eventually. Therefore the decision to paint the house was made. A company from Moscow was hired and the crew arrived on Friday, October 14. The house needed to be pressure washed, taped and prepped before any painting could begin. At the time they thought it would take about 4 days to finish. The decision was to paint the house the same white but trim and accents



would be the Maple K forest green instead of the ever-popular 1960's avocado green. After pressure washing the crew got busy with the primer coat (something we didn't realize was going to be done but glad they did). Once the primer

project won't have to be repeated for quite a while.

After



coat was complete, the accent color, a dark green was added. They also had removed all the shutters and set about painting them the matching green. After the accent color they proceeded to tape off the green to apply the white. This is now 4 days later. The crew began to figure out that the house with all the nooks and crannies had more surface than originally appeared but they hung in there and were very thorough. They proceeded to paint the white (with one minor overspray on the green that then had to be touched up). When all was complete it took eleven days, the house looked spectacular. Again with the thoroughness of the job and the steel siding, this



The Demeerleer kids had a spectacular run at the Palouse Empire Fair. Grace did a great job with her sewing project and both Grace and Kellan walked away with top prizes for their goats. They have both continued to improve their showmanship skills. Grace also had the opportunity to attend a program at Tufts University in Medford, Boston. In her words, "I spent just over a week at Tufts University in Medford, Boston. During that time we covered all of the big topics in medicine such as surgery, nursing, dentistry, etc. We also got to travel to close universities, my group got to go to the simulation center at Brown University in Rhode Island and got to work with professionals and med. students who were close to finishing school. The program also walked us

through what going through college would be like and then medical school if the career we chose required it. They also talked about rough estimates of the costs of going to school for a career in the medical field, and used that to really emphasize why scholarships and things you can do to save money are so important especially if you want to go into the medical field." In addition they have both been active in school sports this year.

Zakiah and Kamden have also been active in school sports this year. Both have been playing basketball for the Colton teams and Zakiah will also be playing volleyball. They participated in the fair by showing their dog, Java and Zakiah had a new experience in showing a chicken.

She did quite well by taking Grand Champion.

Maisy and Otis participated in their school's jogging marathon to raise money for supplies, books, etc. Both completed the course and did well in their fundraising. We had the opportunity to visit this summer and got to watch their swimming lessons. They have both progressed since then to being on the swim team. They are also participating in in chess and Knowledge Bowl.

Family Update

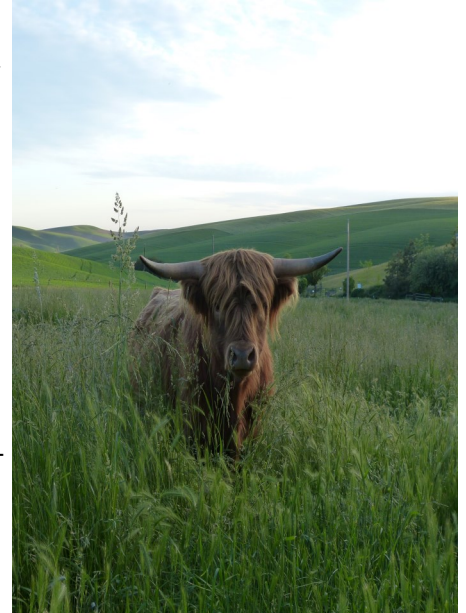


Maple K Farms Update



The cattle faired well this year even with the hot dry summer and fall. As a result of the many years of cross-fencing and water development, the cows enjoyed great pasture feed until late November. In fact, almost half the paddocks did not get grazed due to the quality and quantity of feed available.

Resting paddocks is a luxury that we do not often have but it is great for rejuvenation of the grasses and native plants. As a result, when checking the rested paddocks, we are seeing native flowers and plants that have not been seen for years. Usually we move the cows/calves home about Thanksgiving but this year, it was the second week of December. The weaned calves this year are some of the finest we have ever had. We did get a calf from our new bull Jerimiah. She was heifer calf that is completely black, hooves, tongue, hair, everything. Not one white hair. The next calf crop will be interesting to see if this trait continues.



Port Duties Expand



As you know, for the last eleven years I have been a Port of Whitman County Commissioner as well as working on the farm. My district expanded slightly from representing Whitman County (which for reference by square miles the same size as the state of Rhode Island) to now include the states of Oregon, Washington, and Idaho. The expansion of responsibilities came when I was elected to be the President of the Pacific Northwest Waterways Association. PNWA represents the interests of navigation, agriculture, irrigation, cruise lines, shipping companies, PUD's, fishing industries as well as all the ports from the

California/Oregon border to Bellingham, WA and includes the river ports on the Columbia and Snake Rivers from Astoria to Lewiston. PNWA has over 150 members and is an 85 year old organization that has one of if not the best reputations in the Northwest for Federal advocacy. I will be broadening my knowledge base as I do not have great depth of information on the subject of coastal ports, but I am learning as we speak. Please send me happy thoughts. My term as President will be 2 years.

